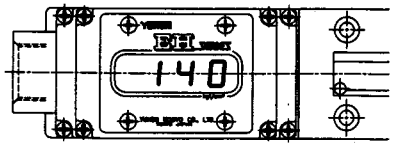
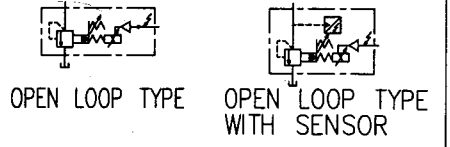


WITH DPM(OPTIONAL)

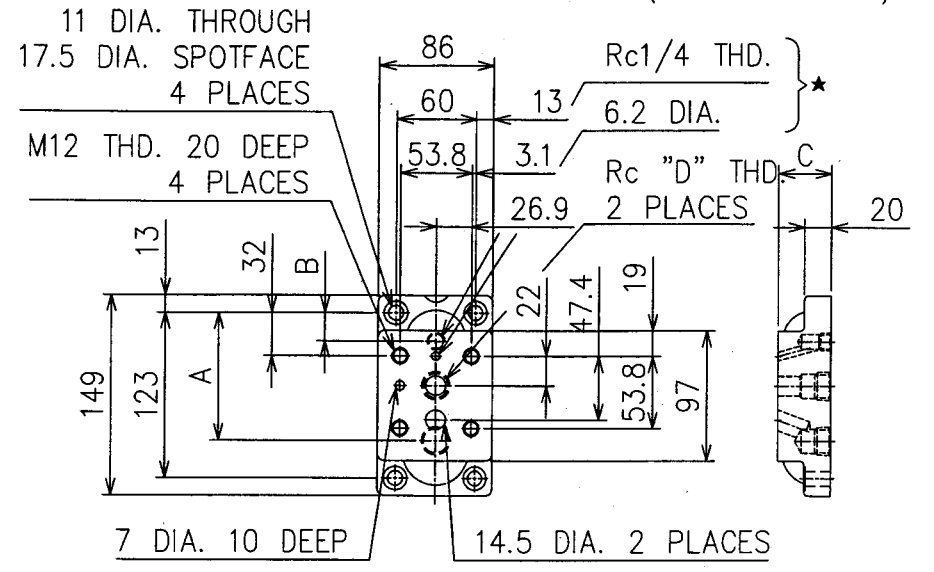


GRAPHIC SYMBOLS



SUB-PLATE

★ THIS PORT CONNECTION IS NOT USED. (PLUG IS REQUIRED)



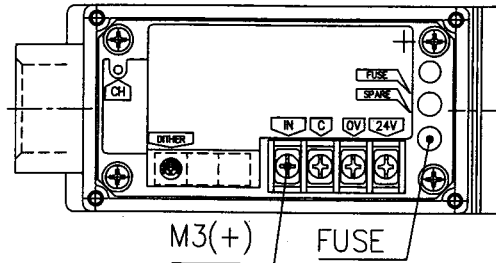
MODEL NUMBERS	A	B	C	D	MASS
BGM-03-20	86	26	32	3/8	2.4 kg
BGM-03X-20	95	21	40	1/2	3.1 kg

SUB-PLATES ARE AVAILABLE. SPECIFY SUB-PLATE MODEL FROM THE TABLE LEFT. WHEN SUB-PLATES ARE NOT USED, THE MOUNTING SURFACE SHOULD HAVE A GOOD MACHINED FINISH.

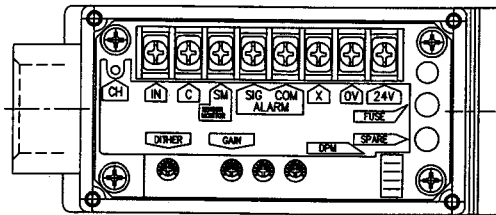
5016 D

SYM REVISIONS/DATE/SIGN	DATE	DRAWN	YUKEN KOGYO CO., LTD.	
	03-4-25	M.G	MODEL NO.	EHBG-03-B-**-5016
	APPROVED	CHECKED	NAME EH SERIES	
	<i>M. Ode</i>	<i>m. yamazaki</i>	PROPORTIONAL ELECTOR-HYDRAULIC RELIEF VALVES	
	三角法	THIRD ANGLE PROJECTION	3/8, SUB-PLATE MOUNTING	
	FILE NO.	DWG NO.		
	Z16-597EH	VA326122-9-0	1/3	

■DETAIL OF AMPLIFIER  
1,CONNECTING TERMINAL  
•OPEN LOOP TYPE



•OPEN LOOP TYPE WITH SENSOR

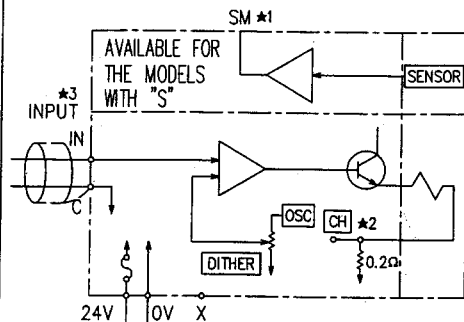


TERMINAL	NAME
IN	INPUT(+)
C	INPUT(COM)
SM	SENSOR MONITOR(TO C)
X	(OPEN)
0 V	POWER SUPPLY
24 V	
CH	OUTPUT CURRENT CHECK(TO C)

TERMINAL	NAME
IN	INPUT(+)
C	INPUT(COM)
SM	SENSOR MONITOR(TO C)
ALARM SIG	ALARM OUTPUT
COM	
X	(OPEN)
0 V	POWER SUPPLY
24 V	
CH	OUTPUT CURRENT CHECK(TO C)

2,CIRCUIT SCHEMATIC

•OPEN LOOP TYPE  
•OPEN LOOP TYPE WITH SENSOR



- \*1. FOR "SM" TERMINAL, EXTERNAL INSTRUMENTS SHOULD HAVE INPUT IMPEDANCE OF MORE THAN 10kΩ.
- \*2. FOR "CH" TERMINAL, EXTERNAL INSTRUMENTS SHOULD HAVE INPUT IMPEDANCE OF MORE THAN 10kΩ.
- \*3. USE SHIELDED CABLE FOR "INPUT" CONNECTION. THE GROUND OF THE SHIELDED CABLE MUST BE CONNECTED INPUT SIGNAL SIDE.

■INSTRUCTIONS

- AIR BLEEDING  
TO ENSURE STABLE CONTROL, BLEED THE AIR FROM SOLENOID COMPLETELY AND FILL ITS CORE WITH OIL. BLEEDING CAN BE DONE BY SLOWLY LOOSENING ONE OF THE AIR VENTS AT THE END OF THE SOLENOID. CHOOSE ONE OF THE THREE AIR VENTS WHICH IS EXPECTED TO WORK MOST EFFECTIVELY.
- MANUAL ADJUSTMENT SCREW  
WHEN INTIAL ADJUSTMENTS ARE TO BE MADE OR WHEN NO CURRENT IS SUPPLIED TO THE VALVE DUE TO ELECTRICAL FAILURE OR OTHER PROBLEM, TURN THE MANUAL PRESSURE ADJUSTMENT SCREW TO TEMPORARILY SET THE VALVE PRESSURE. IN THAT CASE, WHEN TURN THE MANUAL PRESSURE ADJUSTMENT SCREW CLOCKWISE, THE VALVE PRESSURE RISES. UNDER NORMAL CONDITION, HOWEVER, THIS SCREW MUST BE KEPT IN ITS ORIGINAL POSITION.
- TANK PIPING  
THE TANK-LINE BACK PRESSURE DIRECTLY AFFECT THE MINIMUM ADJUSTMENT PRESSURE. THEREFORE, DO NOT CONNECT THE TANK PIPE TO OTHER LINE, BUT CONNECT THEM DIRECTLY TO THE RESERVOIR MAINTAINING THE BACK PRESSURE AS LOW AS POSSIBLE. BE SURE THAT THE TANK PIPE ENDS ARE IMMERSSED IN FLUIDS.
- DITHER/GAIN  
USE AS THEY ARE SINCE THEY ARE FACTORY-PRESET TO THE OPTIMUM POSITION. (DO NOT TOUCH THEM IN NORMAL CONDITION.)



5016 D

SYM REVISIONS/DATE/SIGN	DATE	DRAWN	YUKEN KOGYO CO., LTD.	
	APPROVED	CHECKED		MODEL NO. EHBG-03-B-**-5016
	三角法 THIRD ANGLE PROJECTION		NAME EH SERIES	PROPORTIONAL ELECTOR-HYDRAULIC RELIEF VALVES 3/8, SUB-PLATE MOUNTING
	FILE NO. Z16-597EH	DWG NO. VA326122-9-0	3/3	

■INSTRUCTIONS

MAX. OPERATING PRESSURE.....24.5MPa  
 MAX. FLOW.....100 L/min  
 MIN. FLOW.....3 L/min  
 PRESSURE ADJUSTMENT RANGE.....0.6~6.9MPa  
 SAFETY VALVE PRESSURE SETTING  
 .....10 MPa (AT 50L/min)  
 REPEATABILITY.....LESS THAN 1%  
 HYSTERESIS.....LESS THAN 2%  
 FREQUENCY RESPONSE.....10 Hz/90°C  
 TRAPPED OIL VOLUME : 1 LTR  
 PRESSURE : 50% ± 10% FLOW RATE : 100 L/min  
 COIL RESISTANCE.....10 Ω  
 SUPPLY ELECTRIC POWER.....  
 24 V DC (21 V TO 28 V DC INCLUDED RIPPLE)  
 POWER INPUT(MAX.).....28 W  
 INPUT VOLTAGE.....RATED PRESSURE/5 V DC  
 INPUT IMPEDANCE.....10 kΩ  
 ALARM SIGNAL OUTPUT(OPEN COLLECTOR)....  
 VOLTAGE : MAX. 30 V DC  
 CURRENT : MAX. 40 mA  
 PRESSURE SIGNAL OUTPUT.....  
 5 V DC/RATED PRESSURE  
 AMBIENT TEMPERATURE.....  
 0~50° (WITH CIRCULATED AIR)

■HYDRAULIC FLUIDS

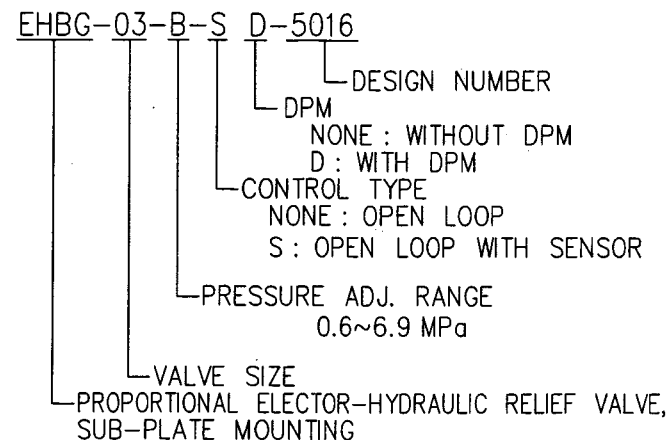
- TYPE OF HYDRAULIC FLUIDS  
 PETROLEUM BASE OIL :  
 USE FLUIDS EQUIVALENT TO ISO VG 32 OR VG 46.
- RECOMMENDE FLUID VISCOSITY AND TEMPERATURE  
 USE HYDRAULIC FLUIDS WHICH SATISFY THE BOTH  
 RECOMMENDED VISCOSITY AND IOL TEMPERATURES  
 GIVEN IN THE TABLE BELOW.

VISCOSITY	15-400 mm <sup>2</sup> /s
TEMPERATURE	-15-+70 °C

●CONTROL OF CONTAMINATION

DUE CAUTION MUST BE PAID TO MAINTAINING CONTROL  
 OVER CONTAMINATION OF THE HYDRAULIC FLUIDS  
 WHICH MAY OTHERWISE LEAD TO BREAKDOWNS AND  
 SHORTEN THE LIFE VALVE. PLEASE MAINTAIN THE  
 DGREE OF CONTAMINATION WITHIN NAS 1638-GRADE 11.  
 USE 20 μm OR FINER LINE FILTER.

■MODEL NUMBER DESINATION



■MOUNTING BOLT

SOC. HD. CAP SCREW : M12×40 LG...4PCS.



5016 D

SYM REVISIONS DATE SIGN	DATE	DRAWN	YUKEN KOGYO CO., LTD.	
	APPROVED	CHECKED		
	三角法 THIRD ANGLE PROJECTION		NAME EH SERIES PROPORTIONAL ELECTOR-HYDRAULIC RELIEF VALVES	
	FILE NO. Z16-597EH	DWG NO. VA326122-9-0	3/8, SUB-PLATE MOUNTING	
			2/3	